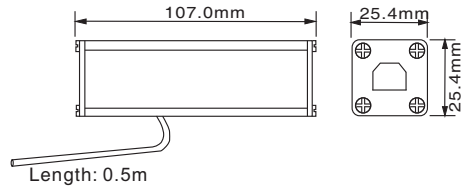


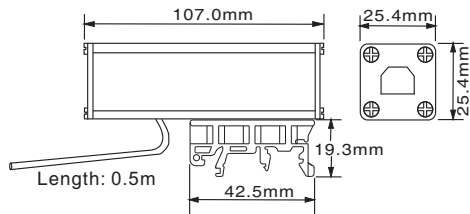
## ■ Dimensions

LxWxH: 107.0mmx25.4mmx25.4mm



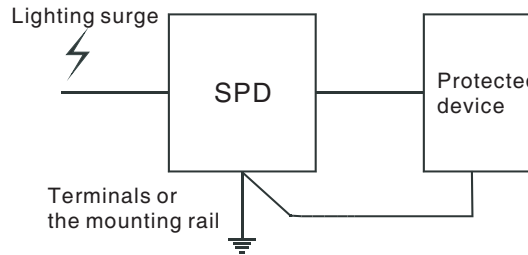
## DIN rail module

LxWxH: 107.0mmx25.4mmx44.7mm()



## ■ Ground wiring

Notes: SPD must be reliably grounded. SPD grounding wires and the shell of the protected devices should be jumped together and connect to ground via SPDs. If the protected devices have no terminals for grounding, connect SPDs to ground only. The grounding wires should have a cross-sectional area bigger than 2.5mm<sup>2</sup>.



## ■ Maintenance

- (1). Check if the connections are correct and tight before powering on SPDs.
- (2). SPDs' quality are well controlled and strictly inspected before delivery. If non-functional ones are found during operation, please contact us early enough.
- (3). Within 5 years of delivery, any problems occurred during normal operations can get treatments free.

## Surge Protective Device

CZLB-RJ Series



Before using the product, please read this manual carefully and save it well.

### ⚠ Caution

- Please check whether the product type on the package accords to the ordering contract;
- Read this manual carefully before installation or use. If there is something unclear, you can dial our technic support hotline;
- Prevent friction, avoid electrostatic;
- Users are not allowed to dismantle or repair the SPD otherwise it will induce malfunction.

## SHANGHAI CHENZHU INSTRUMENT CO.,LTD.



Add: Building 6, 201 Minyi Road, Caohejing Hi-Tech Park  
Songjiang New Industrial Park, Shanghai 201612, P.R. China  
Tel : +86-21-64513350 Fax : +86-21-64846984  
Email : chenzhu@chenzhu-inst.com  
<http://www.chenzhu-inst.com>

## General

Series of CZLB-RJ SPDs are used to protect devices such as telephone, fax, ADSL, router, switch, and computer networks from being damaged by lightning surges or over voltage without interrupting the signal transmission.

These SPDs characterize quick response, low signal attenuation and good electromagnetic shielding. 35mm standard rail is optional for easy mounting.

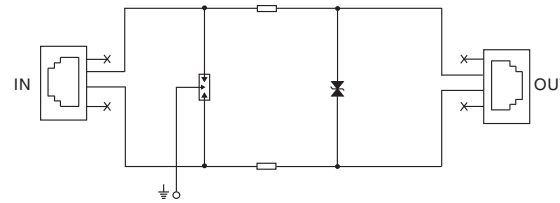
## Main technical parameters

Parameter \ Type	CZLB-RJ11	CZLB-RJ45
Nominal operation voltage $U_n$	110VDC	5VDC
Max. operation voltage $U_c$	170V	6V
Nominal discharge current $I_n(8/20\mu s)$	2kA	2.5kA
Max. discharge current $I_{max}(8/20\mu s)$	4kA	5kA
Total discharge current $I_{total}(8/20\mu s)$	8kA	20kA
Protection level $U_p(L\ to\ L)$	280V	40V
Protection level $U_p(L\ to\ G)$	600V	600V
Cores	2	4
Connection standard	RJ11	RJ45

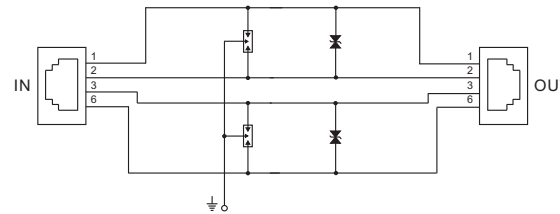
Response time :	< 1ns
Voltage bandwidth(-0.5dB):	10MHz
Ambient temperature :	-40°C ~ +70°C
Relative humidity :	10% ~ 90%
Testing standard :	GB/T 18802.21 IEC61643-21
Performance test :	Shanghai Lightning Protection Center
Protection rating (IEC60529) :	IP 20
Housing material:	Aluminum alloy
Mouting(specified in oreders):	Standard DIN 35mm rail

## Schematic diagram

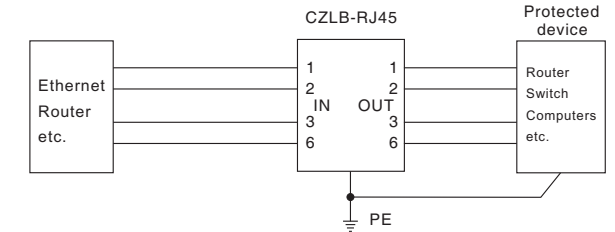
CZLB-RJ11:



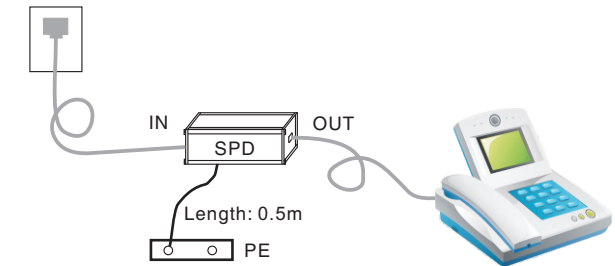
CZLB-RJ45:



CZLB-RJ45

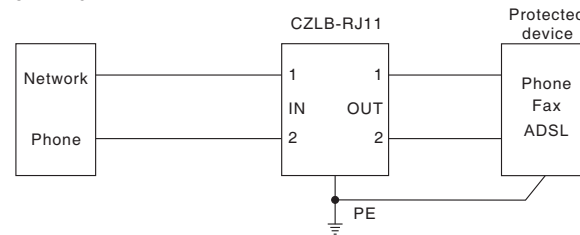


CZLB-RJ11



## Typical application

CZLB-RJ11



CZLB-RJ45

